

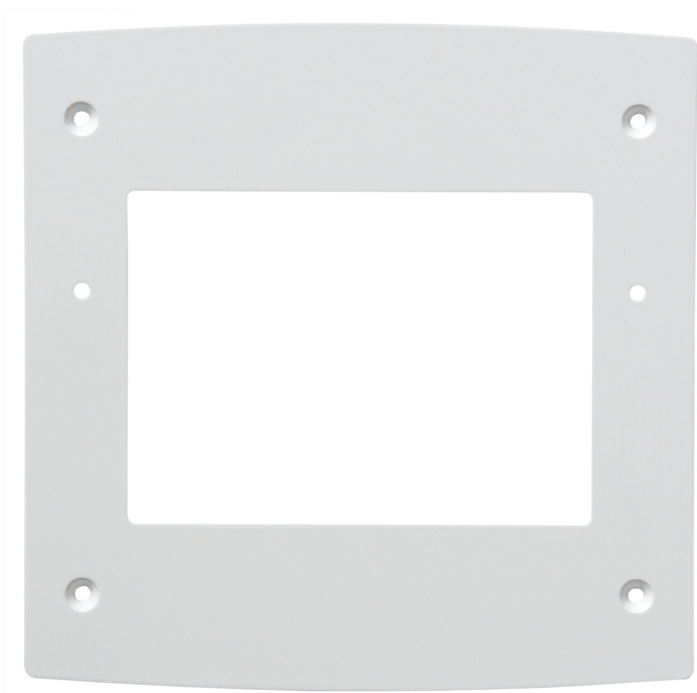


Adapter plate WS1 Color

for the conversion of WS20 to WS1 Color

Technical specifications and installation instructions

Part numbers 60147 (white), 601471 (aluminium coloured)



Elsner Elektronik GmbH Control and Automation Technology

Sohlengrund 16

D - 75395 Ostelsheim

Germany

Phone+49 (0) 70 33 / 30 945-0

Fax +49 (0) 70 33 / 30 945-20

info@elsner-elektronik.de

www.elsner-elektronik.de

Technical Service: +49 (0) 70 33 / 30 945-250

1. Description

Using the **Adapter plate WS1 Color**, the WS1 Color controller can be mounted on the concealed box of the older WS20 model.

1.1. Deliverables

- Adapter plate
- 4 screws 4 × 30 TZD, Torx (DIN WN57)
- 2 screws with locknuts M4–0,7x10 mm, Allen screw (DIN 7991)

1.2. Technical specifications

Colours	<ul style="list-style-type: none"> • white glossy (No. 60147) • aluminium coloured glossy (No. 601471)
Dimensions	approx. 176 × 176 × 2,5 (W × H × D, mm)

The product is compliant with the provisions of EU guidelines.

2. Installation and commissioning

2.1. Installation notes



Installation, testing, operational start-up and troubleshooting should only be performed by an electrician.



DANGER!

Risk to life from live voltage (mains voltage)!

There are unprotected live components within the device.

- VDE regulations and national regulations are to be followed.
- Ensure that all lines to be assembled are free of voltage and take precautions against accidental switching on.
- Do not use the device if it is damaged.
- Take the device or system out of service and secure it against unintentional use, if it can be assumed, that risk-free operation is no longer guaranteed.

The device is only to be used for its intended purpose. Any improper modification or failure to follow the operating instructions voids any and all warranty and guarantee claims.

After unpacking the device, check it immediately for possible mechanical damage. If it has been damaged in transport, inform the supplier immediately.

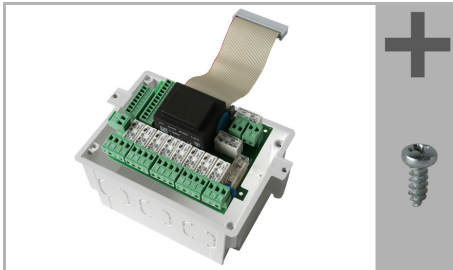
The device may only be used as a fixed-site installation; that means only when assembled and after conclusion of all installation and operational start-up tasks and only in the surroundings designated for it.

Elsner Elektronik is not liable for any changes in norms and standards which may occur after publication of these operating instructions.

2.2. Preparation for mounting

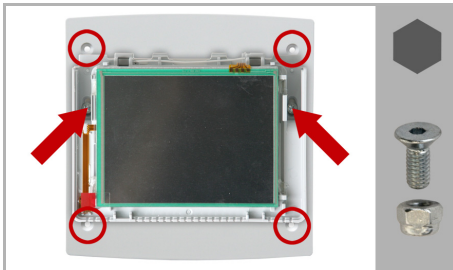
Follow the instructions in the chapter of the same name in the manual for the WS1 Color.

2.3. Mounting the WS1 Color in the WS20 concealed box



Remove the WS1 Color circuit board from the concealed box and mount it in the WS20 concealed box.

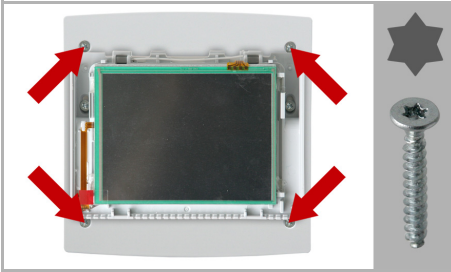
Install the WS1 Color weather station in place of the WS20 weather station. Connect the weather station and the drives/devices to the WS1 Color. In doing so, observe the instructions in the circuit board overview in the manual for the WS1 Color.



Screw the WS1 Color display unit onto the adapter plate with the screws provided. The nuts must show to the rear.

Position the device such the screw holes for fastening the adapter plate remain free.

Connect the flat cable to the display circuit board.



Screw the adapter plate with the WS1 Color onto the WS20 concealed box.

Remove the protective foil on the display (red tab).



Place the WS1 Color frame on the lower part of the housing. To this end, the frame is first suspended below and then clapped shut above and snapped in place.